

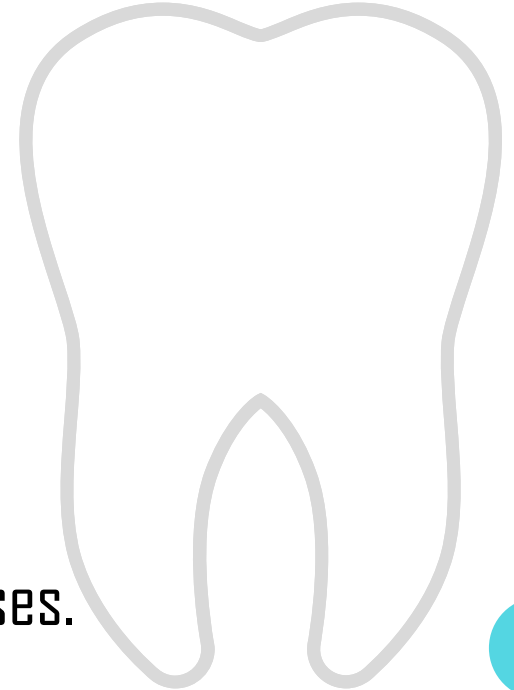
Periodontitis associated with endodontic lesions



Name: Habeb Abdulhamid Abdoun
Supvr: Dr.Asma Albargathi
S.N: 2996 / Y2 dent
Date: 7/3/2022

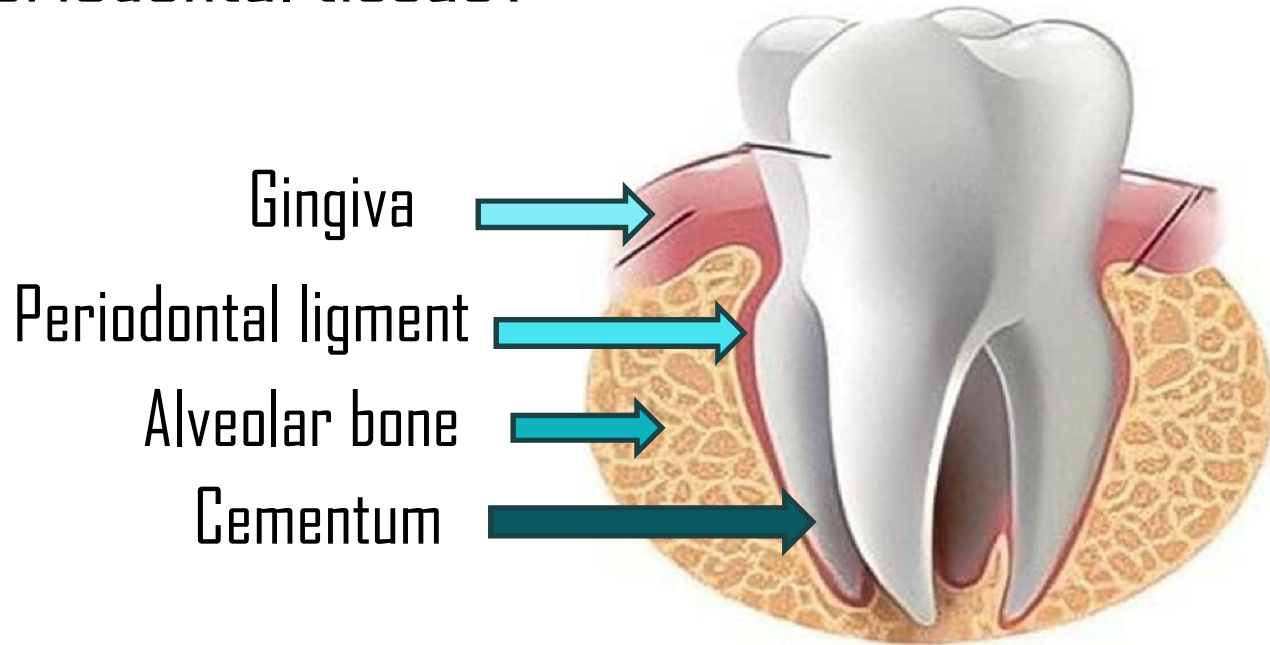
Objectives

- 1 Pathway connection between endodontic and periodontal tissue.
- 2 Etiology of endo-perio lesions.
- 3 Clinical diagnostic procedures.
- 4 Classification of endo-perio lesions.
- 5 Treatment of endodontic and periodontal diseases.



Introduction

What is periodontal tissue?



Pathway connection between endodontic and periodontal tissue

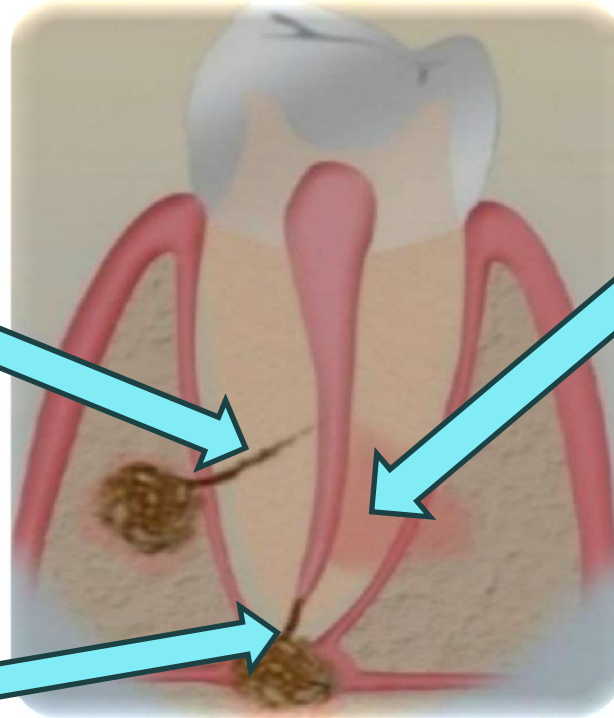
1

Anatomical

Accessory canal

Dentinal tubules

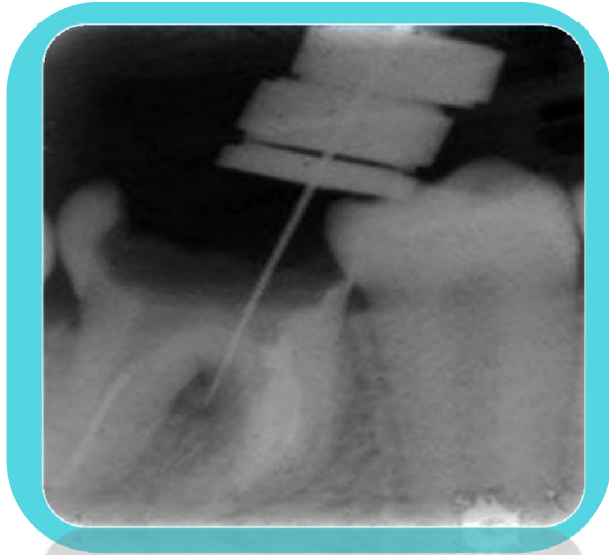
Apical foramen



2

Non-physiological

Iatrogenic root canal perforation



Vertical root fracture



Etiology of endo-perio lesions

Live pathogens



Non-living
pathogens

Live pathogens



Fungi

The major effect on periodontium is *Candida albicans*.

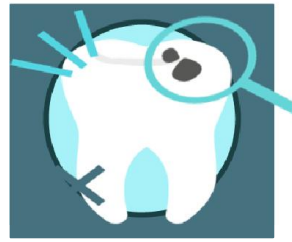
Virus

viruses is play important role in both endo-perio disease example *Herpes simplex virus*.

Bacteria

Play role in formation and progression of both endodontic and periodontal disease for example *porphyromonas gingivalis*.

Non-Living pathogens



Extrinsic agent

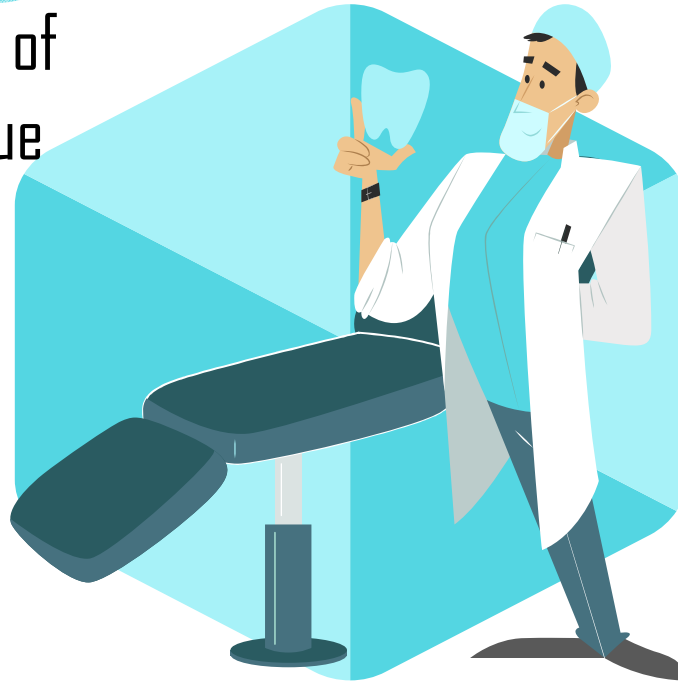
Foreign bodies

Intrinsic agent

Cholesterol

Clinical diagnostic procedures

- 1 Visual examination of soft and hard tissue
- 2 Palpation
- 3 Percussion
- 4 Mobility



Radiographs

5

Pulp vitality test

6

Pocket probing

7

Fistula tracking

8

Classification of endo-perio lesions

**Primary
endodontic
lesion**

Classification of periodontal disease 2014 by
Dr.Khalid S Al-Fouzan.

"Periodontitis associated with endodontic
lesion".

**Primary
periodontal
lesion**

**Combined
lesion**

1

Primary endodontic lesion

Include:-

- ❖ Chronic periapical lesion.
- ❖ Accidental perforations.

Prognosis:- Excellent.



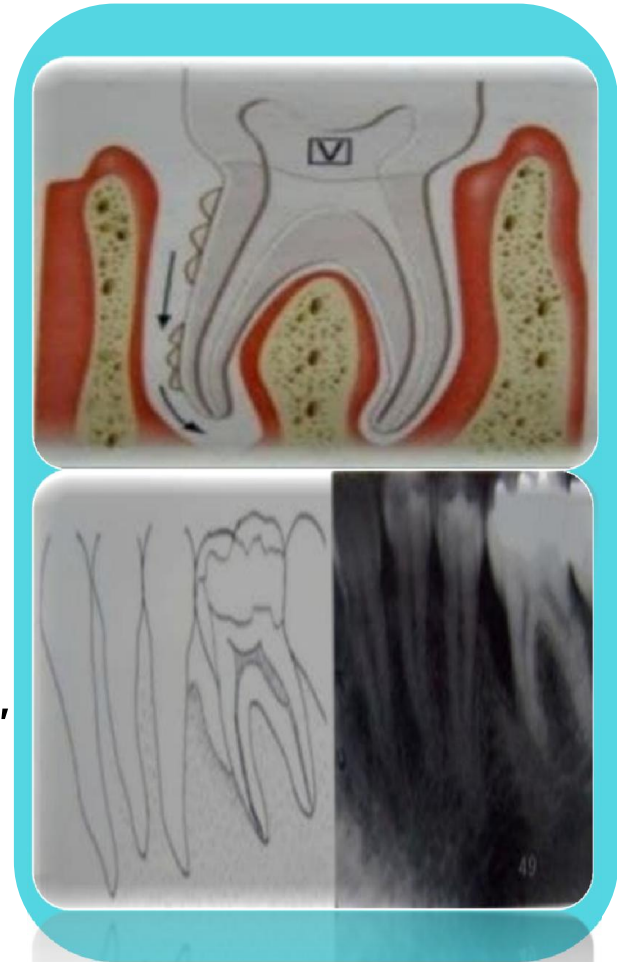
2

Primary periodontal lesion

Include:-

- ❖ Advanced periodontal disease with or without extension to apical area.
- ❖ May Secondary endodontic involvement.

Prognosis:- Depends on extent of periodontitis, and patient maintenance therapy.



3

Combined lesion

Include:-

- ❖ It arises when an endodontic disease progressing coronally joins with an infected periodontal pocket progressing apically.

Prognosis:- Depends on patient maintenance therapy for periodontal disease and root canal therapy to remove periapical lesion.



In these statistics carried out by the journal of periodontology, the relative distribution conducted from 2009 to 2012 shows the prevalence of periodontitis in adults in the America.

55% *CANADA*

25% *VENEZUELA*

40% *U.S.A*

30% *BRAZIL*

60% *MEXICO*

40% *CHILE*



Treatment of endodontic and periodontal diseases

**Primary
endodontic
lesion**

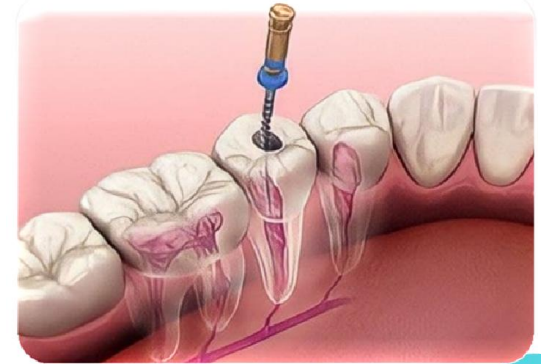
Root canal treatment

**Primary
periodontal
lesion**

Scaling and root planing

**Combined
lesion**

1- Root canal treatment
2-Scaling and root planning



Conclusion

So perio-endo lesion can have various pathogenesis which ranges from simple to complex, to make a correct diagnosis the dentist should have understood the lesions well, so a good diagnosis with the right treatment leads to a better prognosis, at the same time it is important for a person to keep his teeth and Periodic review of the dentist .



References

- ❖ Alshawwa H, Wang JF, Liu M, Sun SF. Successful management of a tooth with endodontic-periodontal lesion: A case report. *World J Clin Cases*. 2020;8(20):5049-5056. doi:10.12998/wjcc.v8.i20.5049
- ❖ Oved-Peleg E, Lin S. *Refuat Hapeh Vehashinayim (1993)*. 2005;22(3):43-91.
- ❖ Al-Fouzan KS. A new classification of endodontic-periodontal lesions. *Int J Dent*. 2014;2014:919173. doi:10.1155/2014/919173
- ❖ Eke PI, Dye BA, Wei L, et al. Update on Prevalence of Periodontitis in Adults in the America: NHANES 2009 to 2012. *J Periodontol*. 2015;86(5):611-622. doi:10.1902/jop.2015.140520
- ❖ Shenoy N, Shenoy A. Endo-perio lesions: diagnosis and clinical considerations. *Indian J Dent Res*. 2010;21(4):579-585. doi:10.4103/0970-9290.74238
- ❖ Grudianov AI, Makeeva MK, Piatgorskaia NV. *Vestn Ross Akad Med Nauk*. 2013;(8):34-36.

Thank You!



