



Lung Cancer in Smokers.

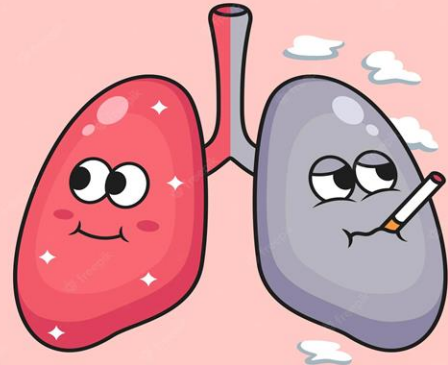
Presented by Hana Almagbre

Student number: 3282

1st year AMS

PTS

Date: 1\6/2022



Introduction



Objectives

- Define Lung cancer.
- Outline causes of Lung cancer.
- List Symptoms of Lung cancer in smokers.
- Describe Diagnosis of Lung cancer.
- List management of Lung cancer in smokers.

Definition of Lung cancer

Lung cancer is cancer that forms in tissues of the lung, usually in the cells that line the air passages, It is the leading cause of death in both men and women, there are a lot of causes but the most common cause is cigarette smoking.



Healthy lungs



Smoker's lungs



Causes of Lung Cancer



1- smoking tobacco :

is most common causes of lung cancer, account for 80% of lung cancer.

2- Exposure to radon :

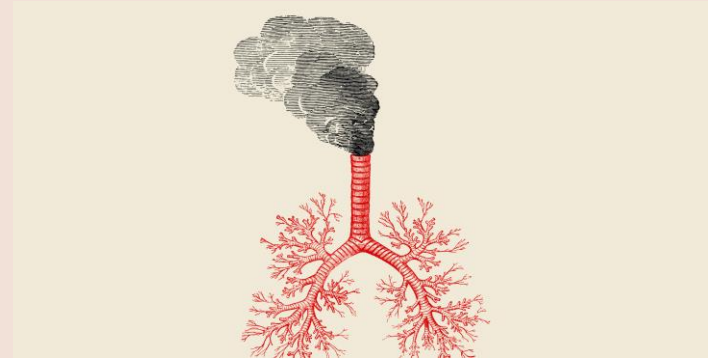
gas increases the risk of lung cancer, and exposure to it is the leading cause of lung cancer in non-smokers, while the second leading cause of lung cancer in smokers after smoking.

3- Genetic changes :

Associated with changes in many cancer and these genetic changes may be inherited or acquired.

4- Air pollution :

Is defined as chemicals, molecules and other substances in the air that may harm health and cause lung cancer.



Symptoms of lung cancer



Chest Pain



Breathlessness



Vomiting



Weight loss



Hoarseness of voice

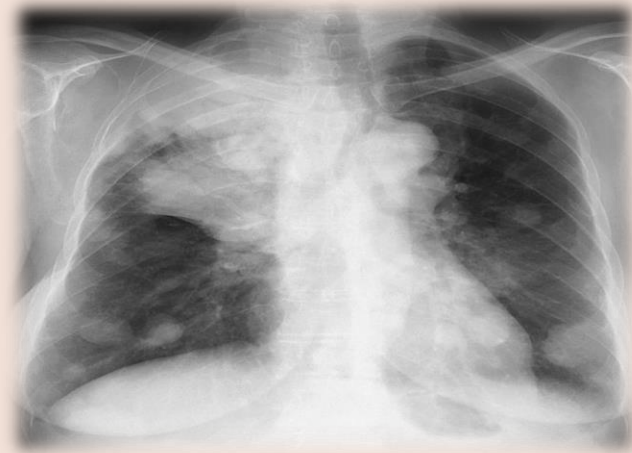


Coughing up blood

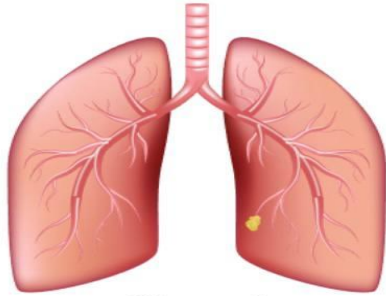
Diagnosis of Lung cancer

- Lung cancer is usually suspected in individuals who have abnormal chest radiograph findings , The method of diagnosis of lung cancer depends on the type of lung cancer (ie, small cell lung cancer or non-small cell lung cancer), the size and location of the tumor.

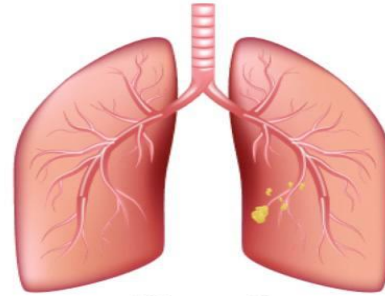
- 1- Chest x ray.
- 2- CT scan.
- 3- Magnetic resonance imaging (MRI).
- 4- Positron emission tomography (PET).
- 5- Biopsy.



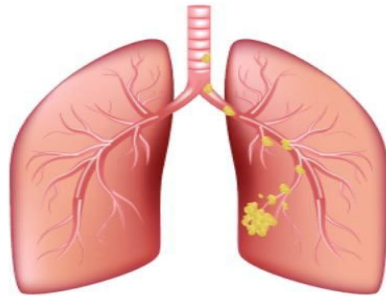
Stage of lung cancer



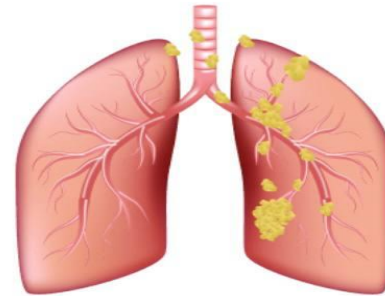
Stage 1



Stage 2

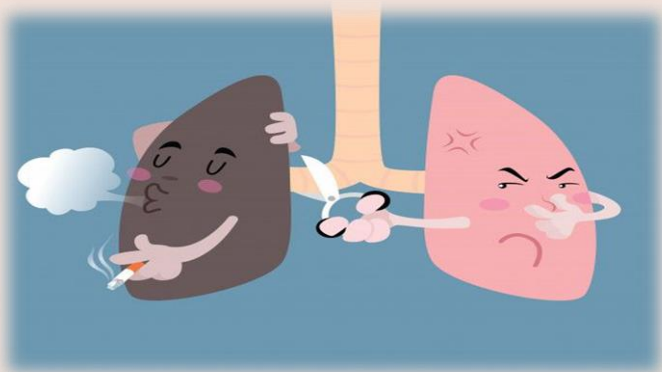
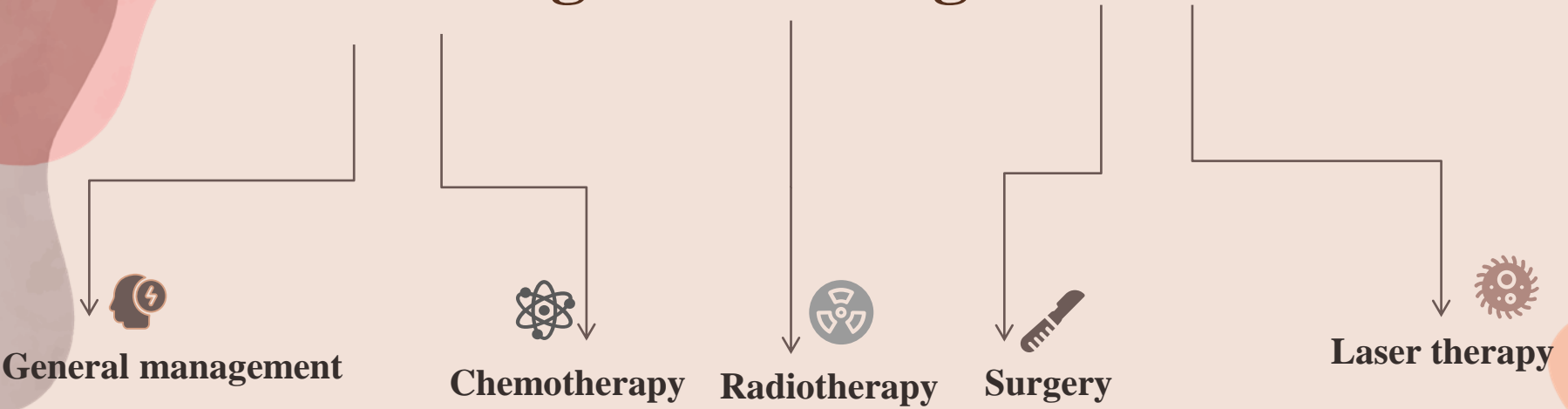


Stage 3



Stage 4

Management Lung cancer



Conclusion:

- Smoking is the leading cause of lung cancer in people who smoke as well as in people who are exposed to secondhand smoke.
- The risk of lung cancer can be reduced by :
 - ✓ Stop smoking.
 - ✓ Avoid secondhand smoke.
 - ✓ reduce exposure to radon gas.
 - ✓ Take precautions to protect yourself from exposure to toxic chemicals at work.



References:

1. Schwartz A, Cote M. Epidemiology of Lung Cancer. 2022
2. Lorenzo-González M, Torres-Durán M, Barbosa-Lorenzo R, Provencio-Pulla M, Barros-Dios J, Ruano-Ravina A. Radon exposure: a major cause of lung cancer. 2022
3. Lung Cancer Signs & Symptoms | Common Symptoms of Lung Cancer. Amp.cancer.org.
<https://amp.cancer.org/cancer/lung-cancer/detection-diagnosis-staging/signs-symptoms.html>.
4. Rivera M, Detterbeck F, Mehta A. Diagnosis of Lung Cancer*. 2022
5. Le T, Bhushan V. First Aid For The USMLE Step 2 CK, Tenth Edition. New York: McGraw-Hill Education; 2018



Thank you...