



كلية الصيدلة
Faculty of Pharmacy



Pathological effects of alcohol and tobacco smoking

By: Anisa Elnaas
Ahmed Al arbi
Esraa Faize



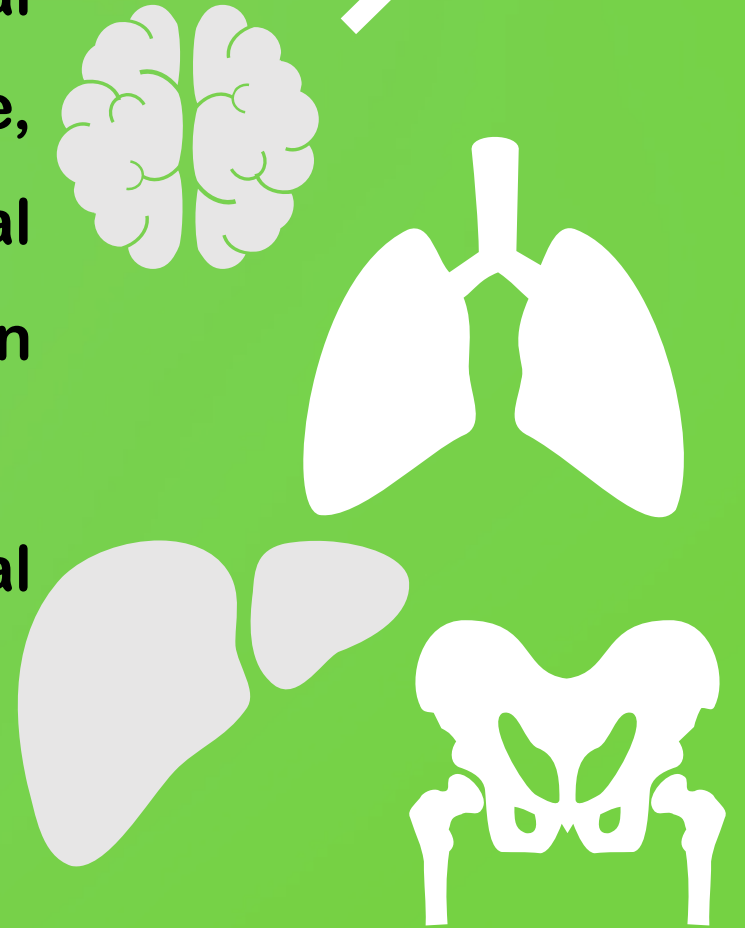
ILO's

- 01** Discuss diseases caused by Smoking
- 02** List Organs effected by smoking and alcohol
- 03** Mention the short term and long term effects of Alcohol consumption
- 04** Mention carcinogens substances in cigarettes and alcohol

Introduction

Environmental factors relate to the individual “personal environment” and include tobacco use, alcohol ingestion, Factors in the personal environment generally have a larger effect on human health than that of the ambient environment.

In this presentation we will discuss the pathological effect of these personal environment.



Approximately 90% of lung cancers occur in smokers.



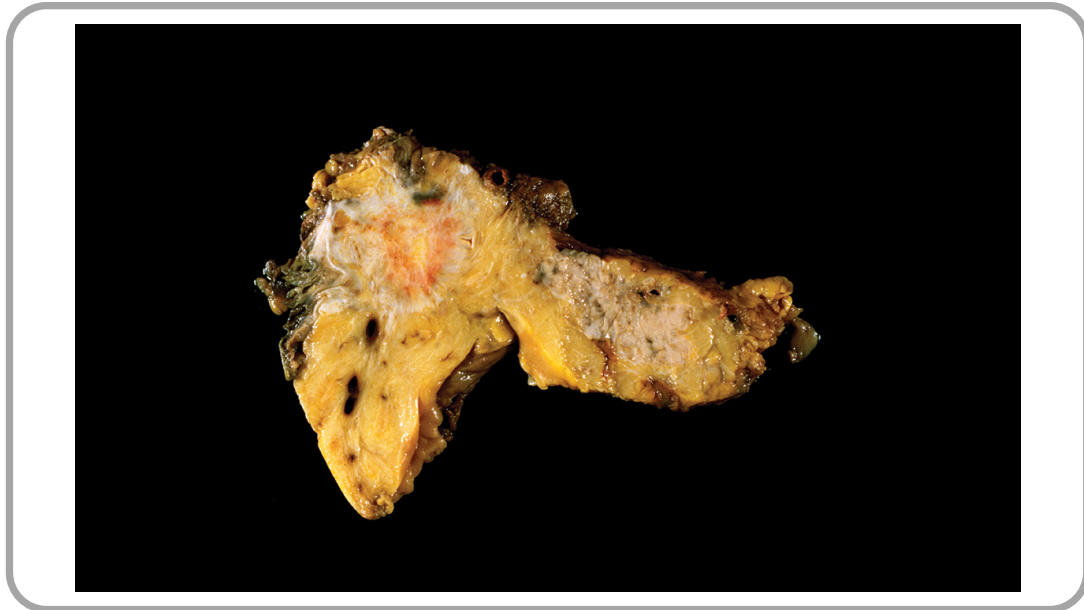
Diseases caused by smoking

Maternal smoking increases the risk of spontaneous abortions and preterm births

-Smoking is also associated with an increased risk of cancers of the oral cavity, larynx, esophagus, stomach, bladder, and kidney, as well as some forms of leukemia. It response in many oral cancers, and Oral - Potentially Malignant Disorders and Potentially Malignant Conditions.



List organs effected by smoking and alcohol



Pancreas with cancer caused by smoking

Organs effected by smoking

➤ Lungs, larynx

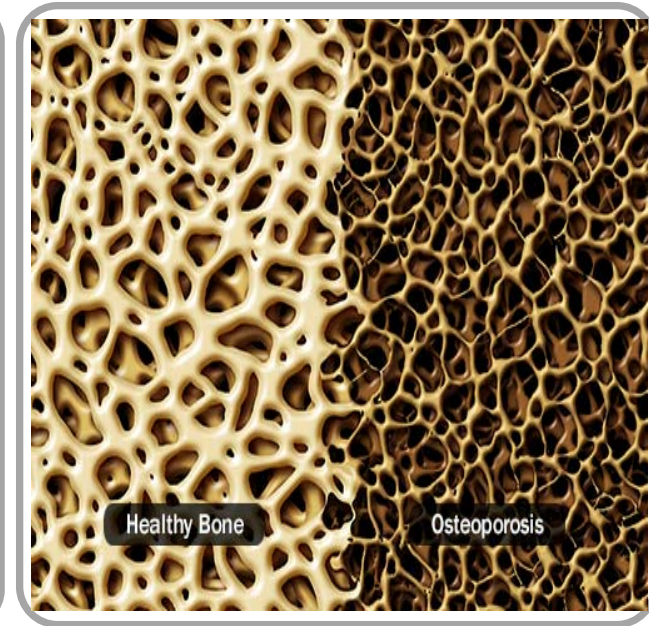
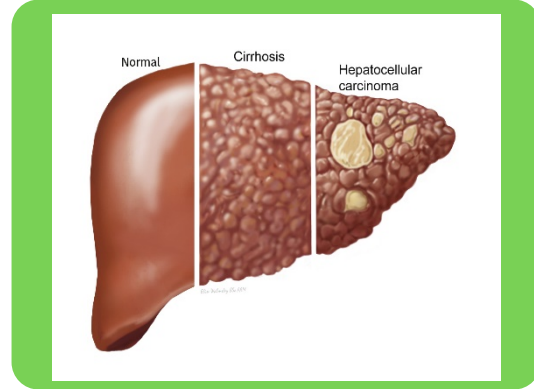
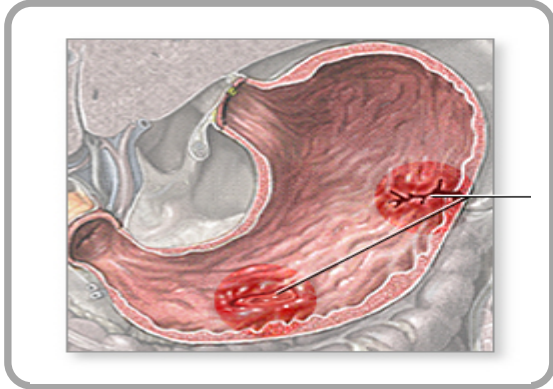
➤ Esophagus

➤ Pancreas

➤ Bladder

➤ Oral cavity

List organs that effected by smoking and alcohol



Organs effected by alcohol

➤ Cardiovascular system

➤ Liver

➤ GIT, stomach

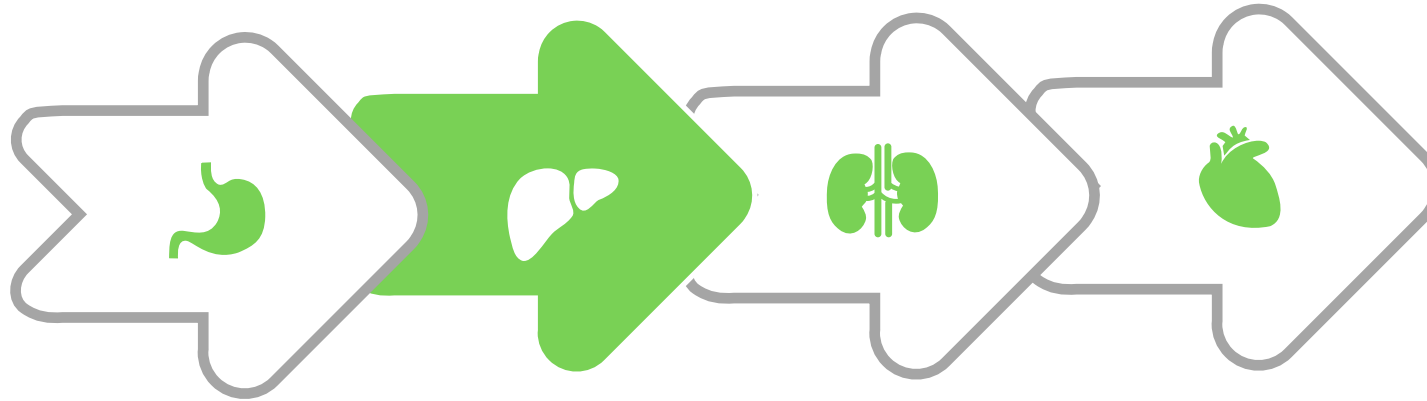
➤ Bone

➤ Nervous System

➤ Endocrine System

➤ Skeletal Muscle

Long term and short term effects of alcohol consumption



Short term effect

- lowered inhibitions
- interpersonal conflict
- altered behavior – including risky or violent behavior
- Hangover
- slow the breathing, leading to a lack of oxygen to the brain.
- Vomiting

Long term effect

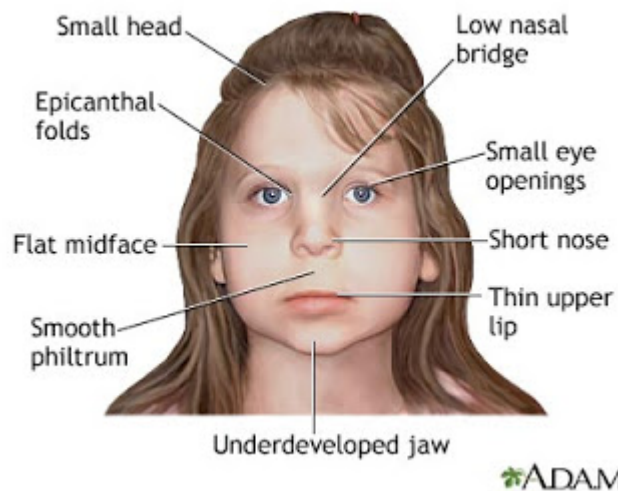
- cardiovascular disease
- Cancers
- diabetes
- nutrition-related conditions
overweight and obesity
- risks to unborn babies
- liver diseases
- peripheral neuropathy
- immune system dysfunction

Effects on pregnancy



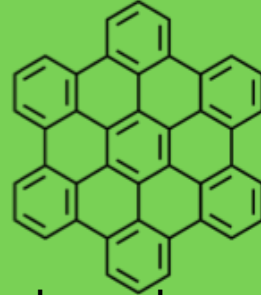
Alcohol in the mother's blood passes to the baby through the umbilical cord. Drinking alcohol during pregnancy can cause miscarriage, stillbirth, and a range of lifelong physical, behavioral, and intellectual disabilities.

- Abnormal facial features, such as a smooth ridge between the nose and upper lip (this ridge is called the philtrum)
- Small head size
- Shorter-than-average height
- Low body weight
- Poor coordination
- Hyperactive behavior
- Difficulty with attention
- Poor memory





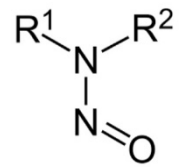
Tar



Polycyclic aromatic hydrocarbons



Nicotine



Mention carcinogens substances in cigarettes and alcohol

Carcinogens substance in cigarettes

- I. Tar and Polycyclic aromatic hydrocarbons are the main carcinogens.
- II. Nicotine is Ganglionic stimulation and depression, tumor promotion.
- III. Phenol is Tumor promotion
- IV. Benzopyrene and Nitrosamine are also carcinogens

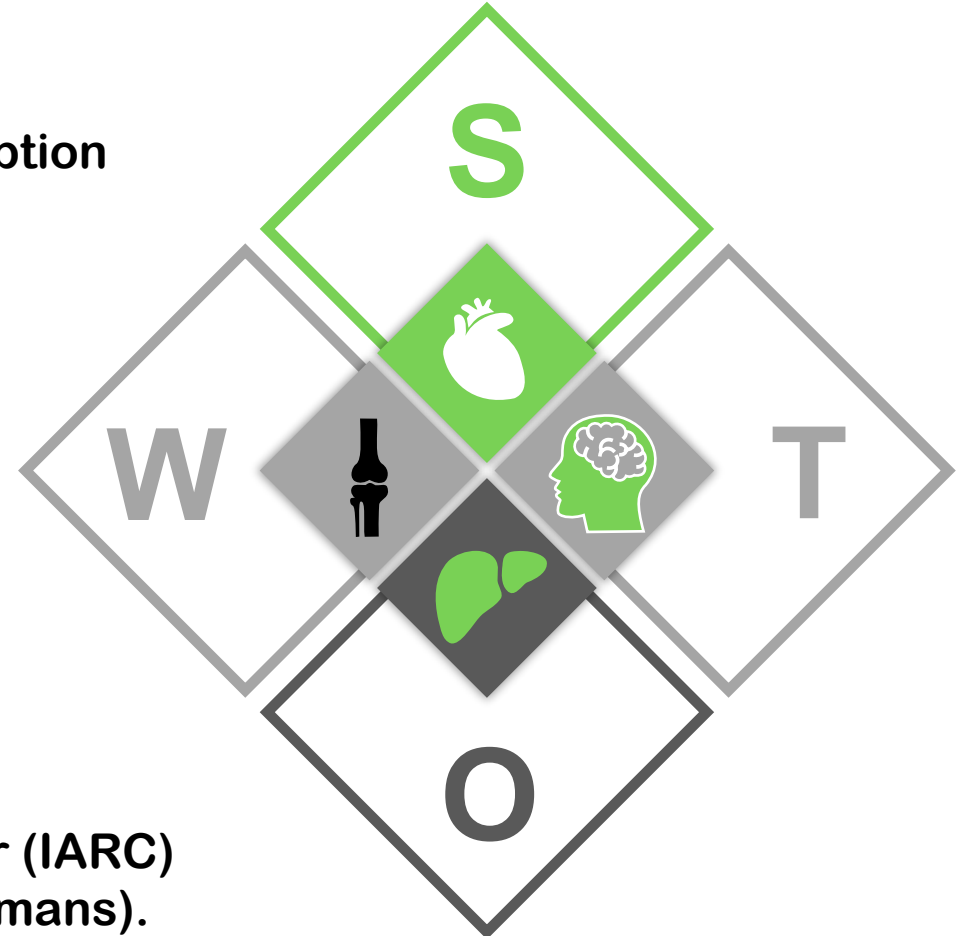
Carcinogens in Alcohol

The main carcinogen is Ethanol in Alcohol Consumers

3.6% of all cancer cases and 3.5% of cancer deaths worldwide are attributable to consumption of alcohol (also known formally as ethanol.)

Even light and moderate alcohol consumption increases cancer risk in individuals

Alcoholic beverages are classified by the International Agency for Research on Cancer (IARC) as a Group 1 carcinogen (carcinogenic to humans).



Summary

We mention the organs that effected by Alcohol consumption, and smoking. Also the diseases that related to Alcohol and smoking

We discussed the effects of alcohol on pregnancy

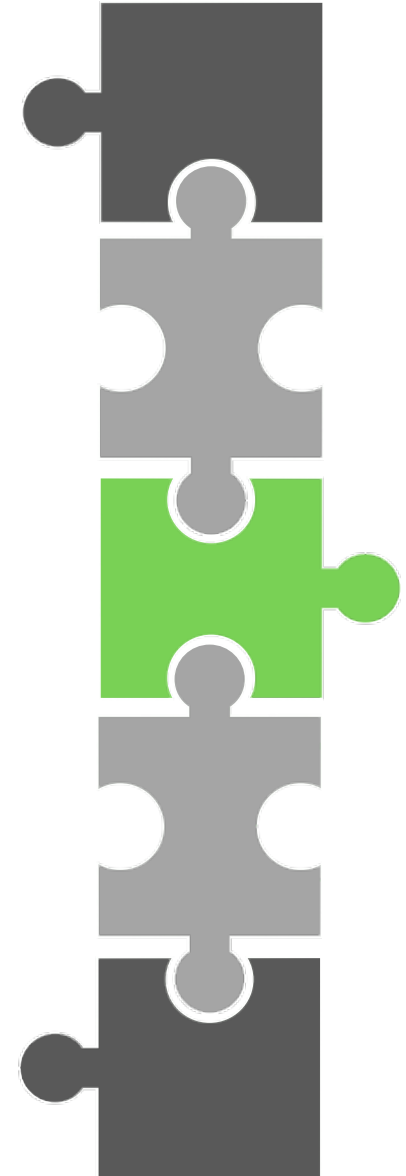


We talked about the pathological effect of alcohol and smoking

We outlined the carcinogens in alcohol and cigarettes

References

- 01 DeLong, L. (2013) *Basic pathology*.
- 02 <https://www.betterhealth.vic.gov.au/health/healthyliving/How-alcohol-affects-your-body>
- 03 www.nicpr.res.in





Thank You